



High Vibrations during operations

- Causes nuts & bolts to loose
- Creating a need to Re-Torque.

But there is no visual indication of a loose nut, so you have to Re-Torque each one of them.

Checkpoint Indicator's;

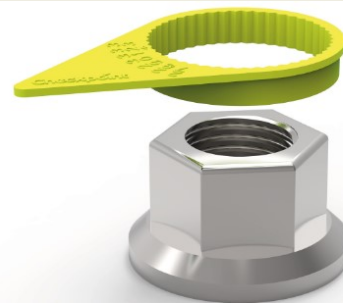
- An intelligent solution
- Enabling Quick Visual Checks
- Enhanced Safety
- Higher Productivity

Checkpoint Range:

- Loose Nut Indicator-Original
- Dustite
- Dustite LR (Long Reach)



Mobility Solutions for Mining Operations by Tyre Experts



Loose Nut Indicator



Dustite



Dustite LR

For more Information Contact Us:

Email: sales@tyrexperts.com

Call/WhatsApp: 9136604919

